



# GAT MONTHLY MEMBERSHIP PROGRESS REPORT

Results as of: 11/30/2022

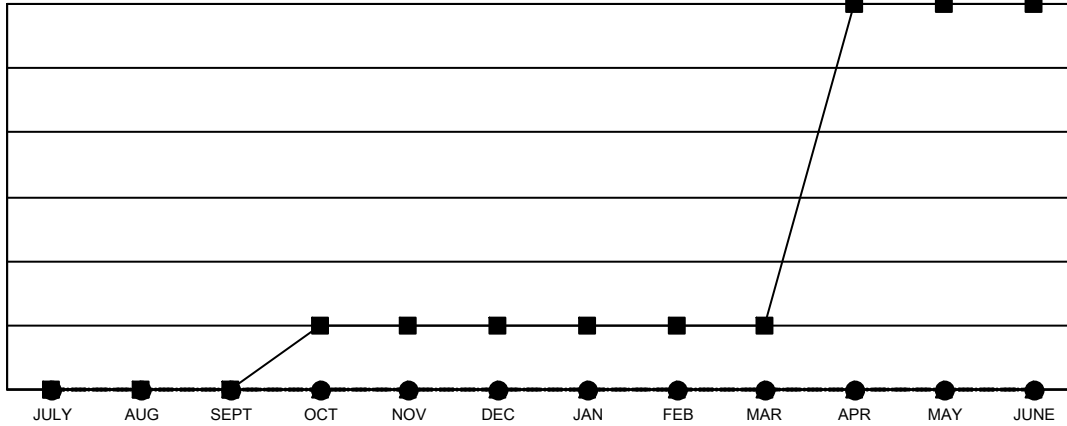
Multiple District 202

LOCATION: NEW ZEALAND

Clubs			
RESULTS FOR 2022-2023			
QUARTER	NEW CLUB GOAL	NEW CLUBS	DROPPED CLUBS
JULY/AUG/SEPT	0	0	3
OCT/NOV/DEC	1	0	1
JAN/FEB/MAR	0	0	0
APR/MAY/JUNE	5	0	0

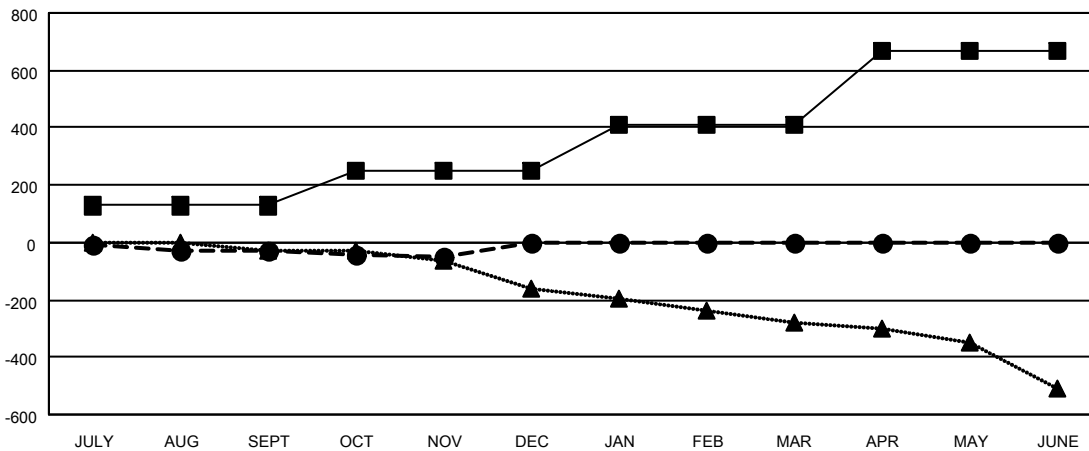
Members			
RESULTS FOR 2022-2023			
QUARTER	MEMBER GROWTH NET GOAL	MEMBER GROWTH ACTUAL	DROPPED MEMBERS ACTUAL (including transfers)
JULY/AUG/SEPT	128	160	161
OCT/NOV/DEC	123	123	134
JAN/FEB/MAR	157	0	0
APR/MAY/JUNE	257	0	0

GOALS AND ACTUAL NEW CLUBS CUMULATIVE



- CURRENT YEAR GOALS FOR NEW CLUBS
- CURRENT YEAR ACTUAL NEW CLUBS
- ▲- LAST YEAR ACTUAL NEW CLUBS

GOALS AND ACTUAL MEMBERS CUMULATIVE



- MEMBER GROWTH NET GOAL
- MEMBER GROWTH ACTUAL
- ▲- LAST YEAR MEMBERSHIP ACTUAL

<b>DROPPED CLUBS: 4</b>	131 CLUBS OF 310 ADDED 1 OR MORE NEW MEMBERS	<b>GENDER DISTRIBUTION</b>
<b>DROPPED MEMBERS</b>	<a href="#">CLICK HERE FOR CUMULATIVE MEMBERSHIP DATA</a>	MALE 5,459 (67.80%)
DECEASED 57		FEMALE 2,592 (32.19%)
CLUB CANCELLED 0		NON BINARY 1 (0.01%)
OTHER 241		PREFER NOT TO ANSWER 0 (0.00%)
<b>TOTAL 298</b>		<b>TOTAL FAMILY UNIT MEMBERS 766</b>
		<b>FAMILY MEMBERS PAYING HALF DUES 386</b>